

Kontyû, 36 (2) : 186-189. 1968

SOME EPHIALTINAE, XORIDINAE AND
BANCHINAE OF TAIWAN
(Hymenoptera : Ichneumonidae)

By Setsuya Momoi

*Entomological Laboratory, Faculty of Agriculture,
Kobe University, Kobe*

In this paper are reported some Ephialtinae, Xoridinae and Banchinae taken on Taiwan by members of Bishop Museum, Honolulu. I am indebted to Dr. C. Yoshimoto for handing me on loan these interesting specimens.

Subfamily EPHIALTINAE

Dolichomitus macropunctatus urainus (Sonan, 1936)

Specimen examined. ♀, Tzepeng, Taitung Hsien, i-ii. 1964, T. C. Maa leg.

Acropimpla leucostoma (Cameron, 1907)

Specimen examined. ♀, Tzepeng, Taitung Hsien, i-ii. 1964, T. C. Maa leg.

Sericopimpla (Charitopimpla) sauteri (Cushman, 1933)

Specimens examined. ♂, Kuraru, Hengchun Park, 250 m. 2. iv. 1965, ♀, Chaochi nr Yilan to Pinglin, Taipei Hsien, 15-16. iv. 1965, C. Yoshimoto leg.

Camptotypus (Camptotypus) rugosus (De Geer, 1773)

Specimen examined. ♀, Puli, vii. 1954, "Native Collector".

Ephialtes taiwanus (Uchida, 1928)

Specimens examined. 2♀, Chito Exp. For., 1150 m, 12-15. x. 1957, T. C. Maa leg.

Coccygomimus formosanus (Cushman, 1922)

Specimens examined. ♀, ♂, Tzepeng, Taitung Hsien, i-ii. 1964, T. C. Maa leg.

Coccygomimus leucogonia (Cushman, 1933)

Specimens examined. 2♀, Tzepeng, Taitung Hsien, i-ii. 1964, T. C. Maa leg.
♀, ♂, Fenkihu, Chiayi Hsien, 1370 m, 10-20. iv. 1965, C. Yoshimoto & B. D. Perkins leg.

Echthromorpha agrestoria notulatoria (Fabricius, 1804)

Specimens examined. 4♀, 2♂, Tzepeng, Taitung Hsien, i-ii. 1964, ♀, ♂, Liukuei, Kaohsiung Hsien, iii-iv. 1964, T. C. Maa leg.

Xanthopimpla stemmator (Thunberg, 1822)

Specimen examined. ♀, Tzepeng, Taitung Hsien, i-ii. 1964, T. C. Maa leg.

Xanthopimpla emaculata (Szépligeti, 1908)

Specimen examined. ♂, Hsintien, Taipei Hsien, 100 m, 29. ix. 1957, T. C. Maa leg.

Theronia (Poecilopimpla) zebra diluta Gupta, 1962

Specimens examined. ♀, Wu Sheh, 660 m, 31. i. 1962, C. Yoshimoto leg. ♀, Tsaoshan (Sozan), 200-300 m, 4-5. viii. 1963, J. Gressitt leg. ♂, Tzepeng, Taitung Hsien, i-ii. 1964, T. C. Maa leg.

Theronia (Parema) nigrobalteata formosana Cushman, 1933

Specimens examined. 2♀, ♂, Tzepeng, Taitung Hsien, i-ii. 1964, 2♀, ♂, Liukuei, Kaohsiung Hsien, iii-iv. 1964, T. C. Maa leg.

Eugalta pilosa (Szépligeti, 1914)

Specimen examined. ♂, Kuraru, Hengchun Park, 250 m, 2. iv. 1965, C. Yoshimoto leg.

Subfamily XORIDINAE

Xorides (Cyanoxorides) rufipleuralis (Cushman, 1933)

Specimens examined. 2♂, Karapan nr Tawu, Taitung Hsien, i-ii. 1964, T. C. Maa leg.

Subfamily BANCHINAE

Glypta orientalis Cushman, 1933

Specimen examined. ♂, Fenkihu, Chiayi Hsien, 370 m, 10-12. iv. 1965, C. Yoshimoto & B. D. Perkins leg.

Apophua formosana Cushman, 1933

Specimen examined. ♀, Kuraru, Hengchun Park, 250 m, 2. iv. 1965, C. Yoshimoto leg.

Apophua kikuchii (Uchida, 1932)

Specimen examined. ♂, Chaochi nr Yilan to Pinglin, Taipei Hsien, 15-16. iv. 1965, C. Yoshimoto leg.

Fintona taiwanensis, new species

♀. Flagellum long, slender, attenuate distally, with 48 segments, all segments longer than wide. Head strongly constricted behind eyes. Occipital carina joining hypostomal carina slightly above base of mandible. Lateral ocellus distant from eye by about 1.0 its diameter. Face about 0.9 as long as wide, almost

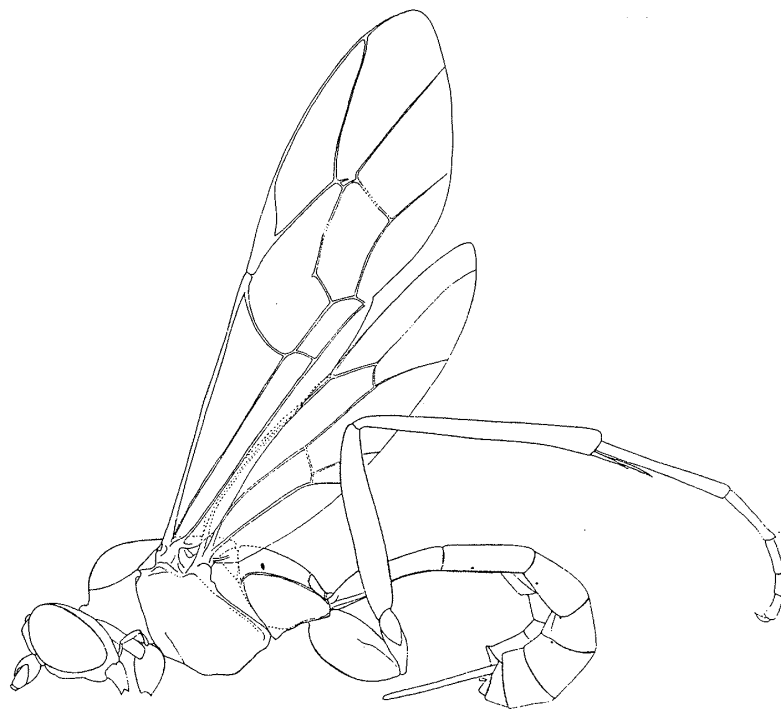


Fig. 1. *Fintona taiwanensis*, in lateral view, excluding flagellum, fore leg beyond the coxa and mid leg.

parallel-sided. Clypeus nearly 0.6 as long as wide, strongly convex in lateral view, its apical margin evenly convex. Malar space about 0.5 as long as basal width of mandible. Head mat, with very fine indistinct punctures those on median portion of face more or less distinct, mostly distant from one another by slightly less than their diameter. Thorax about 2.1 as long as high. Epomia absent. Prepectal carina ending slightly above lower level of pronotum. Notaulus absent. Scutellum moderately convex, with no lateral carina. Submetapleural carina strongly lobed basally. Propodeum of a normal form of *Lissonota* and the allies, with a transverse apical carina, the carina somewhat weakened dorso-laterally. Propodeal spiracle moderate in size, oval. Thorax and propodeum mat, finely and densely subrugulose punctate, the sculpture somewhat stronger on propodeum. Speculum absent. Tergite 1 about 2.5 as long as wide at apex, somewhat swollen baso-medially, almost straight broadened posteriorly, its apical width about 1.5 greater than basal width, its spiracle at basal 0.35. Chitinized portion of sternite 1 short, not extending to spiracle of tergite 1. Tergite 2 about 1.3 as long as wide at apex, strongly broadened backward. Epipleura 2 and 3 narrow. Epipleurum 4 broad, segregated from the tergite in basal 0.75. Tergites mat, progressively more weakly mat on hind tergites. Tergite 1 finely punctate apically. Tergites 2 and 3 finely subrugulose punctate. Ovipositor sheath about 1.0 as long as tergite 1. Legs long, slender.

Tarsal claws long, stout, strongly pectinate. Nervulus distad of basal vein by about 0.6 its own length. Postnervulus broken slightly below middle. Areolet rather small, elongate. Nervellus broken at lower 0.25, weakly reclivous. Body and legs covered with short dense vestiture. Fore wing 8.2 mm long.

Black. Palpi, mandible except for teeth, clypeus, inner orbit narrowly on frons and broadly on face, neck part, humeral angle and hind lower angle of pronotum, hind margin of propleurum, a line on subtegular ridge, upper end of mesepimeron, and tergites 7 and 8, yellowish white. Basal 1/3 and apex of tergite 1, and apical 1/4 of tergites 2 and 3 whitish brown. Antenna blackish brown to black, about seven median flagellar segments yellowish white above. Legs reddish brown. Fore and mid tibiae and tarsi somewhat infusate. Hind coxa, hind trochanters and hind femur blackish above. Hind tibia, basal half of hind tarsal segment 1 and all of hind tarsal segment 5 blackish brown, rest of hind tarsus white. Stigma blackish brown. Wings a little brownish.

Type. ♀ (Bishop), Taiwan: Fenkihu, Chiayi Hsien, 1370 m, 10-12. iv. 1965, C. Yoshimoto & B. D. Perkins leg.

This species can easily be distinguished from *nigripalpis* Cameron, 1909, by the quite different coloration of abdomen and legs.

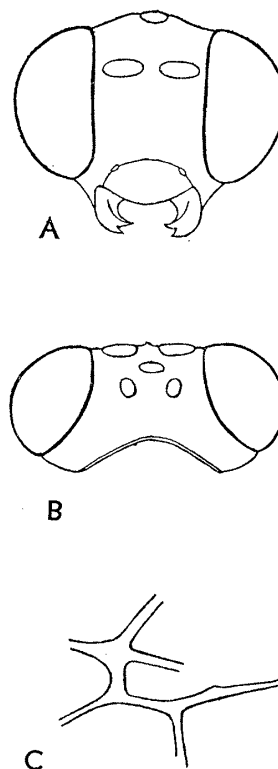


Fig. 2. *Fintona taiwanensis*. A, head in frontal view. B, head in dorsal view. C, areolet of right fore wing.