

Palerasnitsynus gen. n. (Trichoptera, Psychomyiidae) from Burmese amber

Wilfried Wichard^{1,†}, Emma Ross^{2,‡}, Andrew J. Ross^{2,§}

1 Institut für Biologie, Universität zu Köln, Gronewaldstrasse 2, D-50931 Köln, Germany **2** Department of Natural Sciences, National Museums Scotland, Chambers Street, Edinburgh EH1 1JF, Scotland

† urn:lsid:zoobank.org/author:1E8601B2-A8F8-44A6-B185-4FB0B2E5219E

‡ urn:lsid:zoobank.org/author:703E111B-4244-4E84-80A4-7D933ED32114

§ urn:lsid:zoobank.org/author:7E94F6D7-F475-420B-9ECD-E5FDE2D30C28

Corresponding author: Andrew J. Ross (a.ross@nms.ac.uk)

Academic editor: D. Shcherbakov | Received 29 April 2011 | Accepted 5 July 2011 | Published 24 September 2011

urn:lsid:zoobank.org/pub:5D564A51-5888-44AD-99AA-FB21205AF932

Citation: Wichard W, Ross E, Ross AJ (2011) *Palerasnitsynus* gen. n. (Trichoptera, Psychomyiidae) from Burmese amber. In: Shcherbakov DE, Engel MS, Sharkey MJ (Eds) *Advances in the Systematics of Fossil and Modern Insects: Honouring Alexandr Rasnitsyn*. ZooKeys 130: 323–330. doi: 10.3897/zookeys.130.1449

Abstract

Palerasnitsynus ohlhoffi gen. et sp. n. is described from Burmese amber of late Albian (Lower Cretaceous) age. This is the first record of the family Psychomyiidae from Burmese amber, and the earliest fossil record of the family. The genus *Palerasnitsynus* gen. n. differs from all other known psychomyiid genera by the absence of fork III in the forewings.

Keywords

Fossil Trichoptera, fossil insects, aquatic insects, fossil taxonomy, palaeoenvironment

Introduction

Trichoptera are very rare in Burmese amber and previously only two species, *Burminoptila bemeneha* Botosaneanu, 1981 (Hydroptilidae) and *Wormaldia myanmari* Wichard & Poinar, 2005 (Philopotamidae), have been named. Burmese amber from Myanmar is late Albian (late Lower Cretaceous) in age (Ross et al. 2010). Within this paper we describe

the new genus *Palerasnitsynus* based on a male and a female specimen. The new species *P. ohlhoffi* is described from the male specimen. This taxon constitutes the first record of the family Psychomyiidae from Burmese amber and the earliest fossil record of the family.

Only seven fossil psychomyiid species have been described so far: *Arkharina oblimata* Sukatsheva, 1982 comes from Upper Cretaceous of south-eastern Siberia, originally placed in family Philopotamidae but belonging to the Psychomyiidae (Li and Morse 1997). The extinct psychomyiid *Trichopterodomus leonardi* Erikson, 1983 is described from larval retreats from the Paleocene of North Dakota. Five fossil species of the extant genus *Lype* Mclachlan, 1878 are known from Eocene Baltic amber (Wichard et al. 2009).

Taxonomy

Family Psychomyiidae Kolenati, 1859

Palerasnitsynus gen. n.

urn:lsid:zoobank.org:act:FD7212F5-2A0A-41AF-834B-B429CEF89188

<http://species-id.net/wiki/Palerasnitsynus>

Type species. *Palerasnitsynus ohlhoffi* sp. n.

Etymology. The new genus is named after Prof. Dr. Alexandr P. Rasnitsyn on the occasion of his 75th birthday, in recognition of his extensive work on Palaeoentomology.

Diagnosis. Genus *Palerasnitsynus* gen. n. differs from all extant genera (*Paduniella* Ulmer, 1913, *Psychomyia* Latreille, 1829, *Psychomyiella* Ulmer, 1908, *Lype* Mclachlan, 1878, *Padangpsyche* Malicky, 1993, *Tinodes* Curtis, 1834, *Trawaspsyche* Malicky, 2004, *Eoneureclipsis* Kimmins, 1955, and *Zelandoptila* Tillyard, 1924) and the extinct genus (*Arkharina* Sukatsheva, 1982) by the absence of apical fork III in the forewing.

Description. Head: Ocelli absent. Antennae filiform, almost as long as forewings; each scapus only slightly longer than each pedicel and individual flagellomeres; flagellomeres cylindrical. Maxillary palps 5-segmented in both sexes, terminal 5th segment flexible, annulated, and at least twice as long as each of the other segments. Labial palps 3-segmented with flexible, annulated, long terminal segments.

Thorax: Mesoscutum with one pair of setal warts. Legs with tibial spurs 2/4/4. Wings elongate, rounded at apex, hind wings narrower than forewings. Forewing subcosta (Sc) simple, terminating into costa (C) at about three quarters the length of wing. Radius R_1 simple; R_{2+3} unforked, R_{4+5} forking into R_4 and R_5 (fork II) close to potential crossvein r; discoidal cell (Dc) short. Media M_{1+2} unforked, M_{3+4} forking into M_3 and M_4 (fork IV); crossvein m indistinct; median cell (Mc) apparently open. Cubitus Cu_1 bifurcated into Cu_{1a} and Cu_{1b} (fork V); Cu_2 simple; crossvein m-cu apparently present, closing thyridial cell (Tc). Forewings with forks II, IV, and V.

***Palerasnitsynus ohlhoffi* sp. n.**

urn:lsid:zoobank.org:act:7DBC53F5-0678-4639-8D36-C698DA87655C

http://species-id.net/wiki/Palerasnitsynus_ohlhoffi

Figs 1–3

Holotype. Male embedded in Burmese amber, late Albian, Myanmar, deposited in the Staatliches Museum für Naturkunde Stuttgart (ex coll. Rainer Ohlhoff, Saarbrücken). The holotype is well preserved in slightly cloudy amber. The forewings cover the hindwings in dorsal view; the hindwing venation is difficult to analyze due to the overlapping hind wings and forewings. The male genitalia are visible in ventral view. The antennae and legs are completely preserved but the left mid leg is broken.

Etymology. The species is named after Rainer Ohlhoff, who kindly made the fossil available for this study.

Diagnosis. The only species of the genus *Palerasnitsynus* which differs from all other known psychomyiid genera by the absence of apical fork III in the forewings. Length of male 1.9mm (intraspecific variation not known).

Description. Length of male (tip of head to tip of abdomen) 1.9 mm; forewing length 1.9 mm; hind wing length 1.7 mm.

Head: Eyes large and bulbous; ocelli absent; antennae filiform, almost as long as forewings, with cylindrical scapes, pedicel and flagellomeres. Maxillary palps 5-segmented, segment 1 short, segment 2 longer than segments 1 and 3, as long as segment 4, segment 5 flexible, annulated, twice as long as segment 4. Labial palps 3-segmented with long terminal segments, nearly as long as segments 1 + 2.

Thorax: Mesoscutum with pair of setal warts. Tibial spurs 2/4/4. Forewings: Subcosta (Sc) simple, Radius: R_1 simple, R_{2+3} unforked, R_{4+5} forked at cross-vein r; discoidal cell short. Media: M_{1+2} simple, M_{3+4} forked. Crossvein m indistinct, median cell (Mc) apparently open. Cubitus: Cu_1 forked; Cu_2 unforked. Crossvein m-cu apparently present, defining thyridial cell (Tc). Forewings apically rounded; venation with apical forks II, IV and V. Light-coloured hindwing venation indistinct. Rs apparently forked into R_{2+3} and R_{4+5} ; forks I and II apparently absent. Crossvein r apparently absent. M branched, M_{1+2} unforked, M_{3+4} indistinct.

Genitalia: In ventral view, sternite IX with sinusoidal apical margin, bearing pair of two-segmented gonopods; coxopodite short, broad at basis; harpago long. Harpagones regularly curving mesad, widening at apex. Coxopodites with row of strong hairs along median margins; each coxopodite with brush of short, dark setae at apex. In dorsal view two small black spines about half as long as gonopods, visible through hyaline wings. External structures of male genitalia indistinct in lateral and dorsal view.



Figure 1. *Palerasnitsynus ohlhoffi* sp. n. holotype (male) in ventral view. Scale bar 1mm.

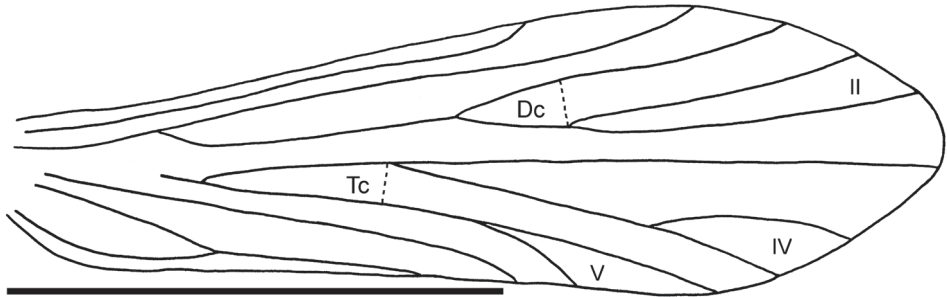


Figure 2. *Palerasnitsynus ohlhoffi* sp. n. male right forewing. Scale bar 1mm.

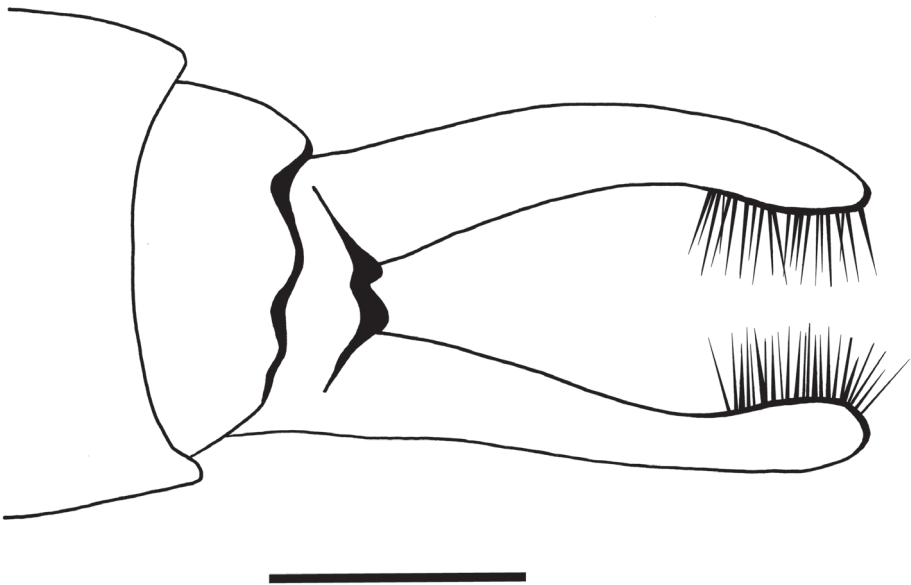


Figure 3. *Palerasnitsynus ohlhoffi* sp. n. male genitalia in ventral view. Scale bar 0.1mm.

***Palerasnitsynus* sp. female**

Figs 4–5

Material. Female imago in Burmese amber, late Albian, Myanmar; deposited in National Museums Scotland, Edinburgh; specimen no. G.2010.20.35 (ex Scott Anderson Coll.).

Description. Length of female (tip of head to tip of abdomen) 2.7 mm; forewing length 2.57 mm.

Head: Length 0.23 mm, width 0.47 mm; filiform antennae each with 28 segments (including basal antennal segment), basal antennal segment twice as wide as other segments and twice as long as first segment; eyes large and bulbous, ocelli absent; maxillary palps 5-segmented, terminal segment flexible, annulated, and long (0.31 mm), and nearly three times longer than each of the other segments (of similar length to each other); labial palps 3-segmented, also with long, flexible and annulated terminal segment.

Thorax: Mesoscutum with setal warts. Forelegs not easy to see; however, each may have 2 short spurs at end of tibia; mid legs each with 2 long spurs at end of tibia, 1 long preapical spur and possibly the base of a second; hind leg with 2 long spurs at end of tibia and 2 long preapical spurs. Tibial spurs: 2?/4?/4.

Wings with short fringe hairs on the anterior margin and long fringe hairs on posterior margin. Left forewing length 2.57 mm; Sc dark and simple, terminating about three-quarters of length of anterior margin; R_1 simple; R_s branching twice, first branch originating at mid-wing, R_{2+3} simple, R_{3+4} branched (= fork II); discoidal cell (Dc) present (crossvein faint); M branching twice, first branch originating at mid-wing, M_{1+2} simple, M_{3+4} branched (= fork IV); Cu branching distally (= fork V); anal veins not visible. Left hindwing apex obscured; Sc dark and simple, terminating about three-quarters of length of anterior margin; R_1 simple, R_s branching once; crossvein r present, discoidal cell present; R_{4+5} connected to M_{1+2} by the crossvein r-m; M branching twice, M_{1+2} ending with short apical fork III, M_{3+4} simple; Cu branching once (= fork V), connected to M by the oblique crossvein m-cu closing thyridial cell apically; anal veins not visible. Forewings each with apical forks II, IV, and V; hind wings each with apical forks III and V.

Genitalia: Length 0.3 mm. Typical long and simple ovipositor present; narrow cleft medio-ventrally and a pair of short apodemes apically.

Remarks. Due to the characteristic features (ocelli absent; maxillary palps 5-segmented and with terminal segment flexible and annulated; mesoscutum with one pair of setal warts; and tibial spurs probably 2/4/4), the female probably belongs to the Psychomyiidae. Due to the absence of forewing apical fork III, the specimen belongs to the genus *Palerasnitsynus* gen. n. The female and *Palerasnitsynus ohlhoffi* sp. n. agree in the forewing venation and differ in the hind wing; the discoidal cells are closed and short forks III are present in the female hind wings, but both traits are absent in *P. ohlhoffi* sp. n. There is no evidence to identify this female specimen as *P. ohlhoffi* sp. n.

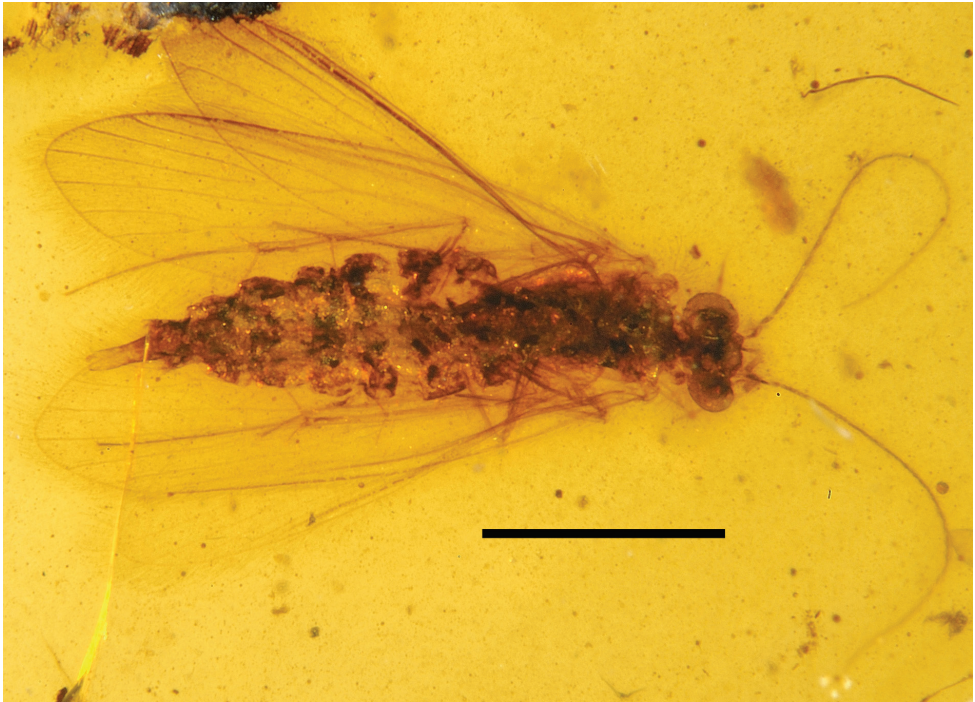


Figure 4. *Palerasnitsynus* sp. female in ventral view. Scale bar 1 mm.

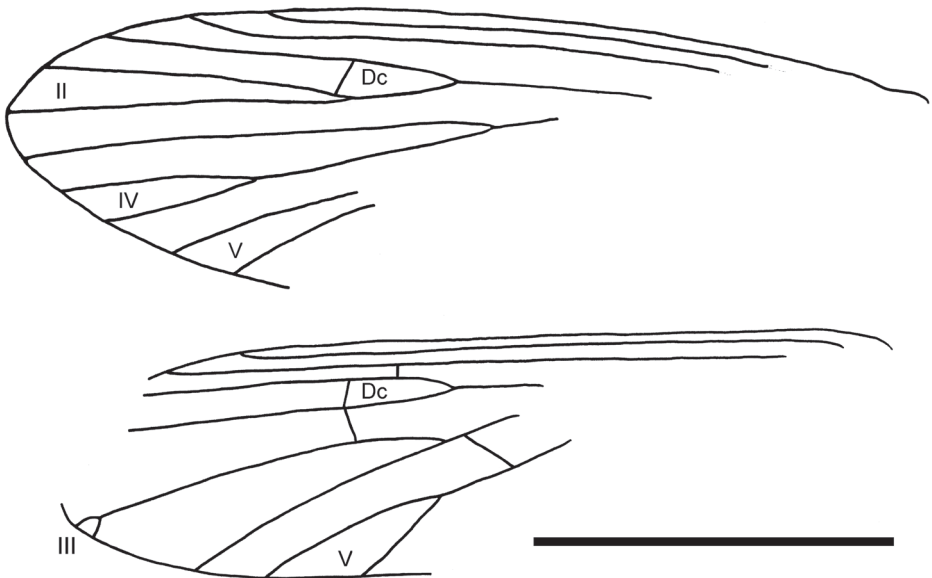


Figure 5. *Palerasnitsynus* sp. female left forewing (part) and left hind wing (part). Scale bar 1 mm.

Discussion

The diversity of insects in Burmese amber is high compared with that of other Cretaceous ambers. Ross et al. (2010) listed 228 arthropod species in Burmese amber, but aquatic insects are rare both in number of individuals and number of described species. There are currently two described species of mayflies (Ephemeroptera) (Sinitshenkova 2000; McCafferty and Santiago-Blay 2009), one species of damselfly (Odonata) (Poinar et al. 2010) and an undescribed stonefly (Plecoptera) figured by Grimaldi et al. (2002). True water bugs and water striders are represented by only one species of the family Hydrometridae (Andersen and Grimaldi 2001). More frequent are amphibious flies (Diptera) in the families Ceratopogonidae, Chaoboridae, Chironomidae, Corethrellidae, Culicidae, Limoniidae, Psychodidae, Tanyderidae and Tipulidae (total 28 described species, see Ross et al. 2010). Only three species of caddisflies (Trichoptera) have been described from Burmese amber: *Burminoptila bemeneha* (Hydroptilidae), *Wormaldia myanmari* (Philopotamidae) and *Palerasnitsynus ohlhoffi* gen. et sp. n. (Psychomyiidae).

The low diversity of aquatic insects in Burmese amber might reflect that the late Albian palaeoenvironment had few freshwater habitats. This contrasts with Eocene Baltic amber diversity, comprising 25% amphibious aquatic insects (Wichard et al. 2009). However, the exploration of Burmese amber and its inclusions is continuing and the total diversity is presently uncertain. Extant Trichoptera of Southeast Asia (with Thailand as geographical centre) have been studied in a monograph by Malicky (2010). In this monograph, about 260 species of Hydroptilidae, 180 species of Philopotamidae and 150 species of Psychomyiidae are described today, which contrasts the single fossil species of each family known in Burmese amber.

Acknowledgements

Many thanks to Bill Crichton (National Museums Scotland) for taking the photograph of the female specimen (Fig. 4). Our special thanks go to John Morse (Clemson, USA) and an anonymous reviewer for constructive comments.

References

- Andersen NM, Grimaldi DA (2001) A fossil water measurer from the mid-Cretaceous Burmese amber (Hemiptera: Gerromorpha: Hydrometridae). *Insect Systematics & Evolution* 32: 381–392. doi: 10.1163/187631201X00263
- Botosaneanu L (1981) On a false and a genuine caddis-fly from Burmese amber (Insecta: Trichoptera, Homoptera). *Bulletin Zoologisch Museum Universiteit van Amsterdam* 8: 73–78.

- Erickson JM (1983) *Trichoptero-domus leonardi*, a new genus and species of psychomyiid caddisfly (Insecta: Trichoptera) represented by retreats from the Paleocene of North Dakota. *Journal of Paleontology* 57: 560–567.
- Grimaldi DA, Engel MS, Nascimbene PC (2002) Fossiliferous Cretaceous amber from Myanmar (Burma): Its rediscovery, biotic diversity, and paleontological significance. *American Museum Novitates* 3361: 1–71. doi: 10.1206/0003-0082(2002)361<0001:FCAFMB>2.0.CO;2
- Li YJ, Morse JC (1997) Phylogeny and classification of Psychomyiidae (Trichoptera) genera. In: Holzenthal RW, Flint OSJr (Eds) *Proceedings of the 8th International Symposium on Trichoptera*. Ohio Biological Survey, Columbus, Ohio, 271–276.
- McCafferty WP, Santiago-Blay JA (2009) A new Cretaceous mayfly from Burmese amber (Ephemeroptera: Australiphemeridae). *Entomological News* 119: 492–496. doi: 10.3157/0013-872X-119.5.492
- Malicky H (2010) *Atlas of Southeast Asian Trichoptera*. Chiang Mai University, Chiang Mai, Thailand, 346 pp.
- Poinar GJr, Bechly G, Buckley R (2010) First record of Odonata and a new subfamily of damselflies from Early Cretaceous Burmese amber. *Palaeodiversity* 3: 15–22.
- Ross A, Mellish C, York P, Crighton B (2010) Burmese amber. In: Penney, D (Ed) *Biodiversity of Fossils in Amber from the Major World Deposits*. Siri Scientific Press, Manchester, 208–235.
- Sinitshenkova ND (2000) The first fossil prosopistomatid mayfly from Burmese amber (Ephemeroptera; Prosopistomatidae). *Bulletin of the Natural History Museum, Geology Series* 56: 29–37.
- Sukatsheva ID (1982) The historical development of the order of caddis flies. *Trudy Paleontologicheskogo Instituta Akademii Nauk SSSR* 197: 1–107. [in Russian]
- Wichard W, Groehn C, Seredszus F (2009) *Aquatic Insects in Baltic Amber*. Kessel Publisher, Remagen, 336 pp.
- Wichard W, Poinar GOJr (2005) Köcherfliegen aus dem Burma Bernstein der oberen Kreide von Myanmar (Insecta, Trichoptera). *Mitteilungen aus dem Geologisch-Paläontologischen Institut der Universität Hamburg* 89: 129–136.