

# Water mites (Acari, Hydrachnidia) from Baishih River drainage in Northern Taiwan, with description of two new species

Vladimir Pešić<sup>1,†</sup>, Rita S.W. Yam<sup>2,‡</sup>, Benny K. K. Chan<sup>3,§</sup>, Tapas Chatterjee<sup>4,|</sup>

**1** Department of Biology, University of Montenegro, Cetinjski put b.b., 81000 Podgorica, Serbia and Montenegro **2** Department of Bioenvironmental Systems Engineering, National Taiwan University, Taipei 10617, Taiwan R.O.C. **3** Biodiversity Research Center, Academia Sinica, Taipei 115, Taiwan R.O.C. **4** Department of Biology, Indian School of Learning, I.S.M. Annexe, P.O. – I.S.M., Dhanbad-826004, Jharkhand, India

† [urn:lsid:zoobank.org:author:719843C2-B25C-4F8B-A063-946F53CB6327](https://doi.org/urn:lsid:zoobank.org:author:719843C2-B25C-4F8B-A063-946F53CB6327)

‡ [urn:lsid:zoobank.org:author:7B4248A8-7B5D-4794-A876-466334667785](https://doi.org/urn:lsid:zoobank.org:author:7B4248A8-7B5D-4794-A876-466334667785)

§ [urn:lsid:zoobank.org:author:8C3C6E7D-96C0-4E60-BF2B-DF76E03CE0BD](https://doi.org/urn:lsid:zoobank.org:author:8C3C6E7D-96C0-4E60-BF2B-DF76E03CE0BD)

| [urn:lsid:zoobank.org:author:F35C0625-55F6-4307-A7BE-93416BE6F0D7](https://doi.org/urn:lsid:zoobank.org:author:F35C0625-55F6-4307-A7BE-93416BE6F0D7)

Corresponding author: Rita S.W. Yam ([ritayam@ntu.edu.tw](mailto:ritayam@ntu.edu.tw))

---

Academic editor: Andre Bochkov | Received 9 May 2012 | Accepted 8 June 2012 | Published 19 June 2012

[urn:lsid:zoobank.org:pub:6785006B-0638-4202-AEFA-7A8D87960707](https://doi.org/urn:lsid:zoobank.org:pub:6785006B-0638-4202-AEFA-7A8D87960707)

---

**Citation:** Pešić V, Yam RSW, Chan BKK, Chatterjee T (2012) Water mites (Acari, Hydrachnidia) from Baishih River drainage in Northern Taiwan, with description of two new species. ZooKeys 203: 65–83. doi: 10.3897/zookeys.203.3356

---

## Abstract

New records of water mites (Acari: Hydrachnidia) from Baishih River drainage of north Taiwan, are presented. Twelve species are recorded, of which ten are new for Taiwan; two of them, *Torrenticola projectura* and *Hygrobates taiwanicus* are described as new for science.

## Keywords

Acari, water mites, new species, running waters, Baishih River drainage, Taiwan

## Introduction

Taiwan is a large island (35, 881 km<sup>2</sup>) located in the Asian Pacific region. As the Tropic of Cancer bisects the Island, the climate changes from subtropical to tropical from the northern to southern parts of the island. The climate of Taiwan is

heavily influenced by monsoons and typhoons which bring an annual rainfall of ~2150 mm, with 80% of precipitation concentrated in the summer (or wet season), i.e. May–October. As there is a central mountain range extending from the north to the south of the island with surrounding plateau and hills, two third of the island is covered by mountainous area with an elevation 100–>3000 m. All rivers in Taiwan are characterized by short length and steep gradient with rapid flows and small drainage basins associated with the steep terrain. Such diverse patterns of geographical typology and hydrology result in the high levels of habitat heterogeneity and aquatic biodiversity of the Taiwan rivers (Shih et al. 2007).

Water mites are one of the most ubiquitous components of the lotic communities. However, detailed investigation on their taxonomy, distribution and ecology is generally lacking in the Asian Pacific region. Furthermore, the water mite fauna of Taiwan is very incompletely known. Recently, we published the results of the first collection of water mites from Taiwan, listing three species of the family Torrenticolidae, two of them were new to science (Pešić et al. 2011). During 2009–2010, in our study of the ecological responses of aquatic macrozoobenthos to land-use and environmental disturbances in Baishih River from the northern Taiwan (Fig. 1), we conducted a bi-monthly biodiversity survey at the six study sites located in this drainage network. The present samples of water mites were collected in this survey.

Baishih River system is located in the northern Taiwan. It is one of the major upstream feeder tributary of the urbanised Xindian River which runs into Danshui River in the New Taipei City. Baishih River originates from both Mount Sanfonsun and Mount Yingtzuling, and drains southwestward into Feitsui Reservoir which provides water supply for the population of the Taipei metropolitan area. Baishih River is ~50 km long and the catchment area is about 310 km<sup>2</sup>. The present study focused on two major tributaries Chinkualiao Stream and Diyu Stream of Baishih River drainage. All study sites are relatively undisturbed by human activities as both Chinkualiao Stream and Diyu Stream are located within the protected area. The riparian area is dominated by natural forest with discontinuous distribution of cultivated land owned by local villagers.

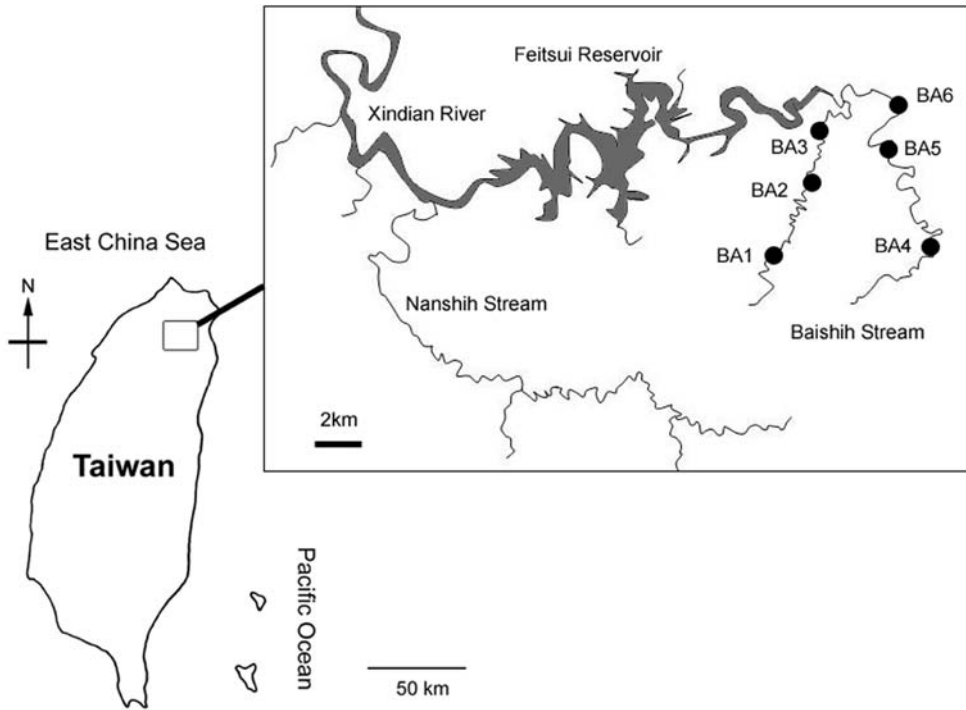
The paper aims to describe the diversity and distribution pattern of water mites from the northern Taiwan. In the present study, twelve species are identified, two of them are new to science. Descriptions of these species are given in this paper.

## Material and methods

In this study, water mites were collected at six sampling sites (Table 1; Figs 1, 2A–F) using standard Surber sampling method with WaterMark<sup>®</sup> Surber Type Stream Bottom Sampler (500 µm mesh). Water mites were sorted in the laboratory with the aid of a stereo microscope and preserved in 90% ethanol. All the material has been collected by Rita Yam and this is not repeated in the text. Holotypes and paratypes of the new species are deposited in the National Museum of Natural Science (NMNS), Taichung, Taiwan. Other materi-

**Table 1.** List of the sampling sites in the present study.

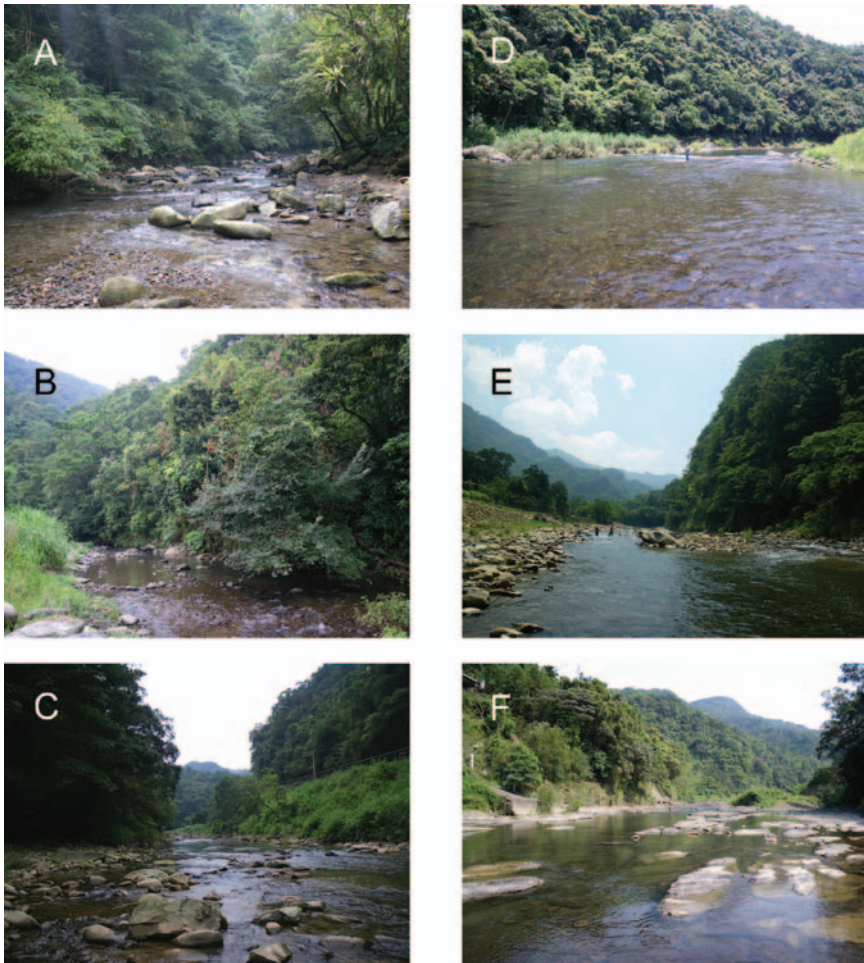
Site code	Latitude	Longitude	Catchment	Subcatchment	Altitude (m asl)
BA-1	121.656242°E	24.882695°N	Baishih River	Chinkualiao Stream	365
BA-2	121.656328°E	24.883970°N	Baishih River	Chinkualiao Stream	343
BA-3	121.674029°E	24.924912°N	Baishih River	Chinkualiao Stream	250
BA-4	121.701640°E	24.908065°N	Baishih River	Diyu Stream	232
BA-5	121.697561°E	24.915911°N	Baishih River	Diyu Stream	210
BA-6	121.696603°E	24.933962°N	Baishih River	Diyu Stream	190



**Figure 1.** Map of study area showing location of the six sampling sites.

als are kept in the collections of the Ecology and Conservation Laboratory, Department of Bioenvironmental Systems Engineering, National Taiwan University (ECL).

In the section ‘Material examined’, the sampling site codes were derived from the geographical database Rita Yam (see Table 1). The composition of the material is given as: males/females/deutonymphs or adults/deutonymphs. All measurements are given in  $\mu\text{m}$ . The following abbreviations are used: asl = above sea level, Cx-I = first coxae, Cxgl-4 = coxoglandularia of fourth coxae, dL = dorsal length, H = height, L = length, W = width, I-L-6 = Leg 1, sixth segment (tarsus), mL = medial length, n = number of specimens examined, P-1 = palp, first segment, Vgl-2 = ventroglandulare 2.



**Figure 2.** Photographs of the six study sampling sites in the present study. **A** = BA-1 **B** = BA-2 **C** = BA-3 **D** = BA-4 **E** = BA-5 **F** = BA-6.

## Systematics

Family Hydrodromidae K. Viets

Genus *Hydrodroma* Koch, 1837

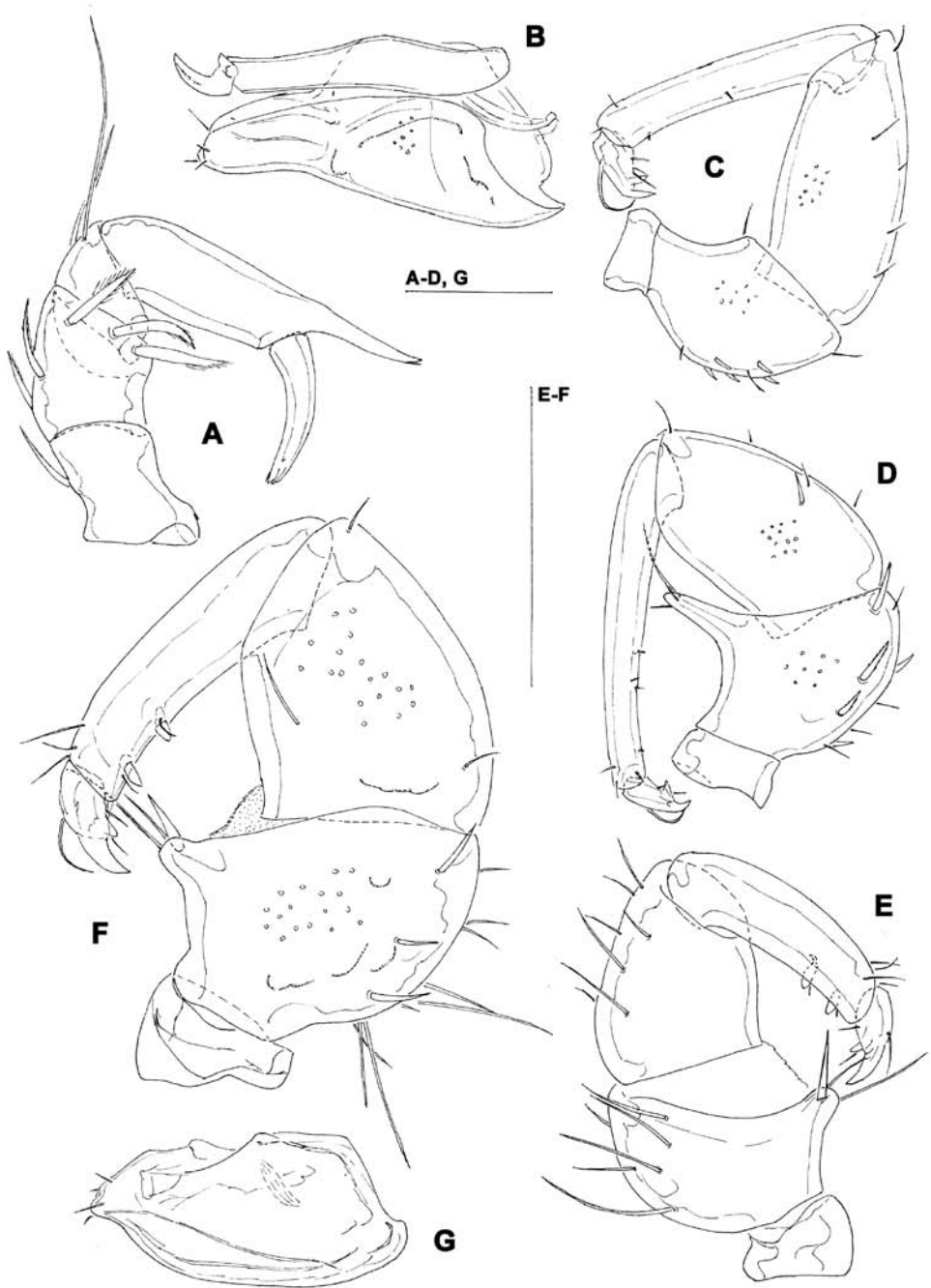
*Hydrodroma* cf. *rheophila* Cook, 1967

[http://species-id.net/wiki/Hydrodroma\\_rheophila](http://species-id.net/wiki/Hydrodroma_rheophila)

Fig. 3A

**Material examined.** ECL-BA-1: 01.vii.2010 0/1/0 (mounted).

**Remarks.** Due to the presence of a single, short swimming hair on segments four and five of the third and fourth legs and the shape of palp (Fig. 3A), the single



**Figure 3.** **A** *Hydrodroma cf. rheophila* Cook, 1967, female: palp. **B–C** *Sperchon rostratus* Lundblad, 1969, female: **B** = palp **C** = capitulum and chelicera **D** *Sperchon cf. gracilipalpis* Lundblad, 1941, female: palp **E–G** *Sperchon cornutoides* Lundblad, 1941 (**F–G** = female, **E** = male) **E–F** = palp **G** = capitulum. Scale bars = 100  $\mu$ m.



specimen from the Chinkualiao stream shows general conformity with *Hydrodroma rheophila*. As Pešić et al. (2010) noted the variability of additional populations tentatively assigned to *H. rheophila* (e.g. from Greece and Oman, see Pešić et al. 2010 and Smit and Pešić 2010, respectively) from different regions of the whole distribution area needs to be examined to clarify the taxonomy. This probably will require the use of molecular approach to examine the degree of genetic differentiation among the geographical populations.

**Distribution.** India, Indonesia, Iran, Oman, Balkan. New for Taiwan.

## Family Sperchontidae Thor

### Genus *Sperchon* Kramer, 1877

#### *Sperchon (Hispidosperchon) rostratus* Lundblad, 1969

[http://species-id.net/wiki/Sperchon\\_rostratus](http://species-id.net/wiki/Sperchon_rostratus)

Figs 3B–C

**Material examined.** ECL-BA-3: iii.2010 0/1/0 (mounted). ECL-BA-5: iii.2010 0/1/0.

**Remarks.** The two females examined in the present study fit well the description of *Sperchon rostratus* Lundblad, 1969. Figures 3B–C show some morphological details of the specimen from Chinkualiao stream.

**Distribution.** Burma, China (Guizhou Province), Turkey, Iran. New for Taiwan.

#### *Sperchon (Hispidosperchon) cf. gracilipalpis* Lundblad, 1941

[http://species-id.net/wiki/Sperchon\\_gracilipalpis](http://species-id.net/wiki/Sperchon_gracilipalpis)

Fig. 3D

**Material examined.** ECL-BA-2: iii.2010 1/1/0. ECL-BA-3: vi.2010 0/1/0 (mounted). ECL-BA-4: iii.2010 5/0 1/0/0 (mounted); iv.2010 0/1/0; 27.vii.2010 1/1/0. ECL-BA-5: iii.2010 1/1/0; iv.2010 0/1/0. ECL-BA-6: iv.2010 0/2/0.

**Remarks.** The specimens from Baishih River drainage are provisionally assigned to the Oriental species *Sperchon gracilipalpis* Lundblad, 1941. However, they resemble both *Sperchon gracilipalpis* and the Palearctic *S. hispidus* Koenike, 1895 (common character state: dorsum of both sexes with seven paired and one unpaired (occasionally paired) muscle attachment plates; III/IV-L-3-5 with numerous pinnate dorsal setae; similar shape of palp (Fig. 3D) and male ejaculatory complex). The diagnostic differences separating these two species have never been discussed. More material of *S. gracilipalpis* from the type area should be investigated in order to get an insight on further diagnostic differences.

**Distribution.** SE Asia, China (Guizhou Province). New for Taiwan.

***Sperchon cornutoides* Lundblad, 1941**

[http://species-id.net/wiki/Sperchon\\_cornutoides](http://species-id.net/wiki/Sperchon_cornutoides)

Figs 3E–G

**Material examined.** ECL-BA-1: 10.viii.2009 0/1/0; iii.2010 0/1/0; 01.vii.2010 0/1/0 (mounted); 02.vii.2010 0/2/0; 30.x.2010 1/0/0. ECL-BA-2: 27.vii.2010 2/0/0 (1/0/0 mounted). ECL-BA-3: 23.ix.2009 0/1/0; iii.2010 0/1/0. ECL-BA-4: iii.2010 0/1/0; 27.vii.2010 1/2/0 (1/1/0 mounted). ECL-BA-5: iv.2010 0/1/0. ECL-BA-6: iii.2010 0/1/0.

**Remarks.** The specimens examined from Baishih River drainage agrees with the description of *Sperchon cornutoides* Lundblad, 1941, a species known only from Java (Lundblad 1936, 1971). This species closely resembles to *Sperchon cornutus* K. Viets, 1935, which can be easily distinguished by the claws bearing two clawlets instead of a claw with one clawlet in *S. cornutoides*. *Sperchon xiaoqikongensis* Zhang & Jin, 2012, a species recently described from mainland China (Guizhou Province, Zhang et al. 2012) resemble the both aforementioned species due to shape of palp and capitulum. According to the original description (Zhang et al. 2012) this species differs from *S. cornutoides* in the absence of muscle attachment plates, shorter peg-like seta on P-2 ventral projection and the presence of peg-like setae on P-2 and P-3 (as shown by figure of Zhang et al. 2012, Fig. 18). It is possible, especially in the case of weakly sclerotized specimens or due the clearing treatment with lactic acid, that muscle attachment plates could easily have been unobserved. The taxonomic state and relationships of this species should be investigated with further specimens from the type area.

**Distribution.** Indonesia. New for Taiwan.

**Family Torrenticolidae Piersig****Genus *Monatractides* K. Viets, 1926*****Monatractides* cf. *circuloides* (Halík, 1930)**

[http://species-id.net/wiki/Monatractides\\_circuloides](http://species-id.net/wiki/Monatractides_circuloides)

**Material examined.** ECL-BA-1: 07.vii.2009 1/1/0; 23.ix.2009 2/0; iv.2010 13/0; 01.vi.2010 1/0; vii.2010 29/0; 27.vii.2010 2/1/0. ECL-BA-2: 02.ix.2009 11/2(1juvenile)/0; ii.2010 57/0; iii.2010 3/1/1; iv.2010 0/2/0; vi.2010 2/2/0; 27.vii.2010 17/0; 29.ix.2010 5/0; 30.x.2010 1/0. ECL-BA-3: 01.vii.2009 1/0/0; 23.vii.2009 1/0/0; ii.2010 4/11/0; ii.2010 10/0; iv.2010 0/1/0; 27.vii.2010 1/0/0. ECL-BA-4: 02.vii.2009 1/0/0; ii.2010 2/1/0; iii.2010 6/4/0; iv.2010 0/1/0; vi.2010 1/0/0; vii.2010 19/0; 27.vii.2010 5/0/0; 30.x.2010 1/0. ECL-BA-5: iii.2010 1/1/0; 01.vi.2010 4/0/0; vii.2010 11/0; 07.vii.2010 1/0/0; 30.x.2010 1/0/0. ECL-BA-6:

17.vi.2009 3/0; iii.2010 2/9/0; vi.2010 0/1/0; 01.vii.2010 1/0/0; 27.vii.2010 1/0/0; 29.ix.2010 1/0.

**Remarks.** It is the most abundant species in our material. For an analysis of diagnostic characters of populations from Taiwan tentatively assigned to *M. circulooides* see: Pešić et al. (2011).

**Distribution.** Malaysia, Thailand, Taiwan.

## Genus *Torrenticola* Persig, 1896

### *Torrenticola taiwanicus* Pešić, Semenchenko, Chatterjee, Yam & Chan, 2011

[http://species-id.net/wiki/Torrenticola\\_taiwanicus](http://species-id.net/wiki/Torrenticola_taiwanicus)

**Material examined.** ECL-BA-1: 07.vii.2009 1/0/0. ECL-BA-3: 27.vii.2010 1/4/0. ECL-BA-4: 02.vii.2009 0/2/0; ii.2010 0/1/0; iii. 2010 0/4/0; iv.2010 0/1/0 (mounted); vi.2010 1/1/0; 27.vii.2010 0/1/0; ECL-BA-5: 21.vii.2009 1/0/0; iii.2010 0/2/0; 01.vi.2010 1/1/0; 07.vii.2010 0/1/0. ECL-BA-6: ii.2010 1/0/0; iii. 2010 0/6/0; 27.vii.2010 0/1/0; 29.ix.2010 3/0.

**Remarks.** The studied material was collected from February to September. For an analysis of diagnostic characters of *T. taiwanicus* see: Pešić et al. (2011).

**Distribution.** Taiwan.

### *Torrenticola projectura* sp. n.

urn:lsid:zoobank.org:act:41E5931A-EFE2-42B6-B0D5-A86EB897B9FF

[http://species-id.net/wiki/Torrenticola\\_projectura](http://species-id.net/wiki/Torrenticola_projectura)

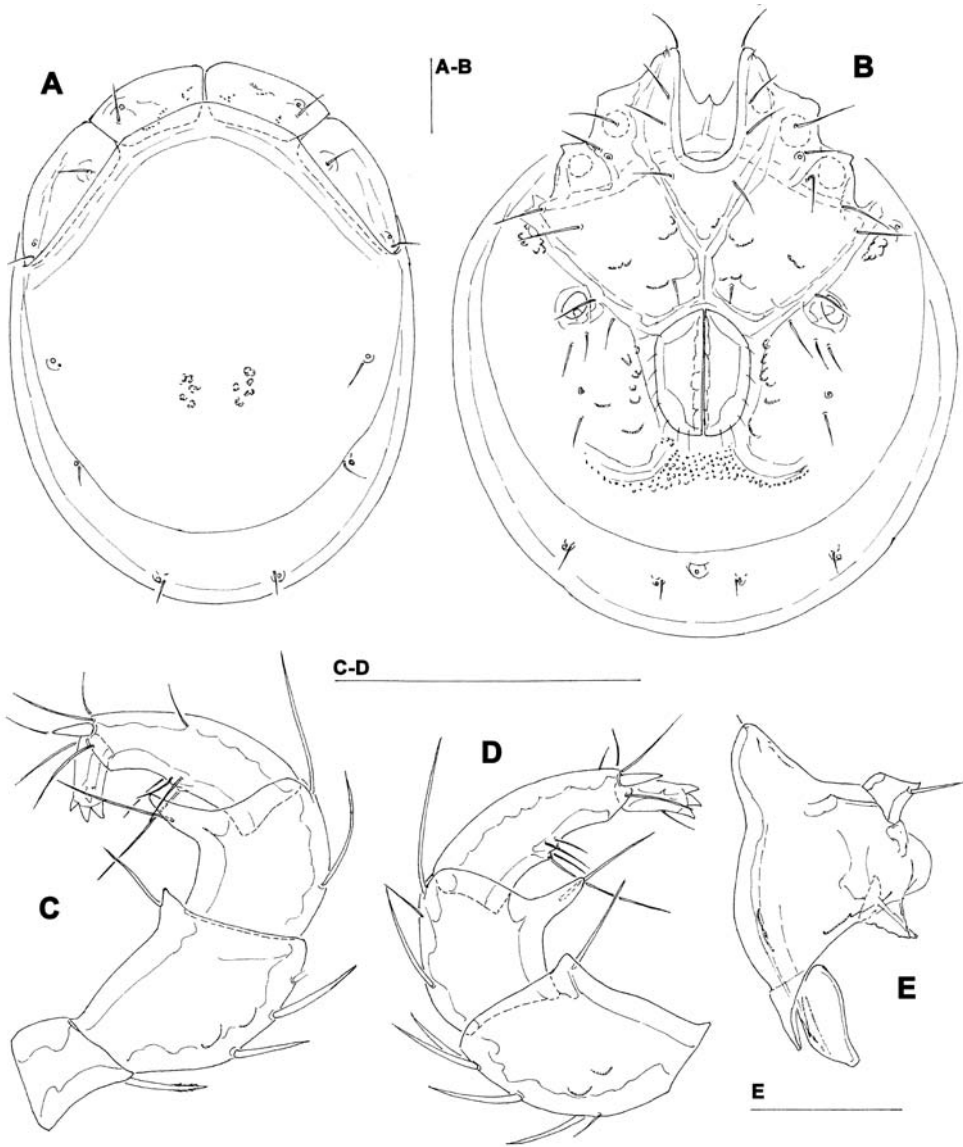
Figs 4A–E

**Type series.** Holotype male (NMNS-6894-002), dissected and slide mounted, Taiwan, BA-1, Baishih River drainage, Chinkualiao Stream, 27.vii.2010. Paratype: one male, same data as holotype; one male, dissected and slide mounted, BA-2, Chinkualiao Stream, 02.ix.2009.

**Diagnosis.** Male (female unknown). Cx-IV extending posterior to genital field; excretory pore posterior to line of primary sclerotization, Vgl-2 slightly posterior to excretory pore; capitulum with a short rostrum; medial suture line of Cx-II+III short; P-2 ventrodiscal projection cone-shaped, pointed towards distal, P-3 ventrodiscal projection larger than projection of P-2, P-3 with a long tapering ventral protrusion which curves distally.

**Description.** Male (holotype, in parentheses measurements of paratype, n = 1) — Idiosoma (ventral view: Fig. 4B) L 788 (738), W 675 (625); dorsal shield (Fig. 4A) L 709 (658), W 544 (525), L/W ratio 1.3 (1.25); dorsal plate 663 (614); shoulder plate L 197-200 (189), W 78-82 (71-75), L/W ratio 2.4-2.6 (2.5-2.7); frontal plate L 163 (154-158), W 71-76 (70-72), L/W ratio 2.1-2.3 (2.1-2.3); shoulder/frontal plate L





**Figure 4.** *Torrenticola projectura* sp. n., male: **A** = dorsal shield **B** = idiosoma, ventral view **C** = palp, medial view **D** = palp (P-1 missing), medial view **E** = capitulum. Scale bars = 100  $\mu$ m.

ratio 1.2 (1.2). Capitular bay L 150 (153), Cx-I total L 270 (263), Cx-I mL 119 (109), Cx-II+III mL 80 (70); ratio Cx-I L/Cx-II+III mL 3.4 (3.8); Cx-I mL/Cx-II+III mL 1.5 (1.6). Genital field L/W 156 (159)/124 (128), L/W ratio 1.26 (1.24); ejaculatory complex normal in shape, L 239 (211); distance genital field-excretory pore 180 (150), genital field-caudal idiosoma margin 272 (234). Capitulum (Fig. 4E) ventral L 231 (225); chelicera total L 275 (269), claw L 65 (65), basal segment L 212 (214), L basal

segment/claw ratio 3.3 (3.3); palp (Figs 4C-D) total L 257 (256), dL: P-1, 35 (34); P-2, 72 (70); P-3, 52 (53); P-4, 72 (72); P-5, 26 (27); dL P-2/P-4 ratio 1.0 (0.97); P-2 ventrally slightly convex, dorsally convex in the proximal, straight in the distal part, ventrodistal projection cone-shaped, pointed towards distal, P-3 with a long tapering ventral protrusion which curves distally, P-4 distally slightly tapering, slightly curved, ventral setae (one long and three short) on flat hump.

**Etymology.** The species is named after the distinctive shape of ventrodistal projection of P-3; ‘*projectura*’ - Latinised form of ‘projection’.

**Remarks.** The shape of ventrodistal projection of P-3 of the new species is very distinctive and can separate it from all other *Torrenticola* species.

**Distribution.** Taiwan.

## Family Hygrobatidae Koch

### Genus *Hygrobates* Koch, 1837

#### *Hygrobates (Hygrobates) taiwanicus* sp. n.

urn:lsid:zoobank.org:act:8A67823A-EC83-418D-80B8-2934848B1D9D

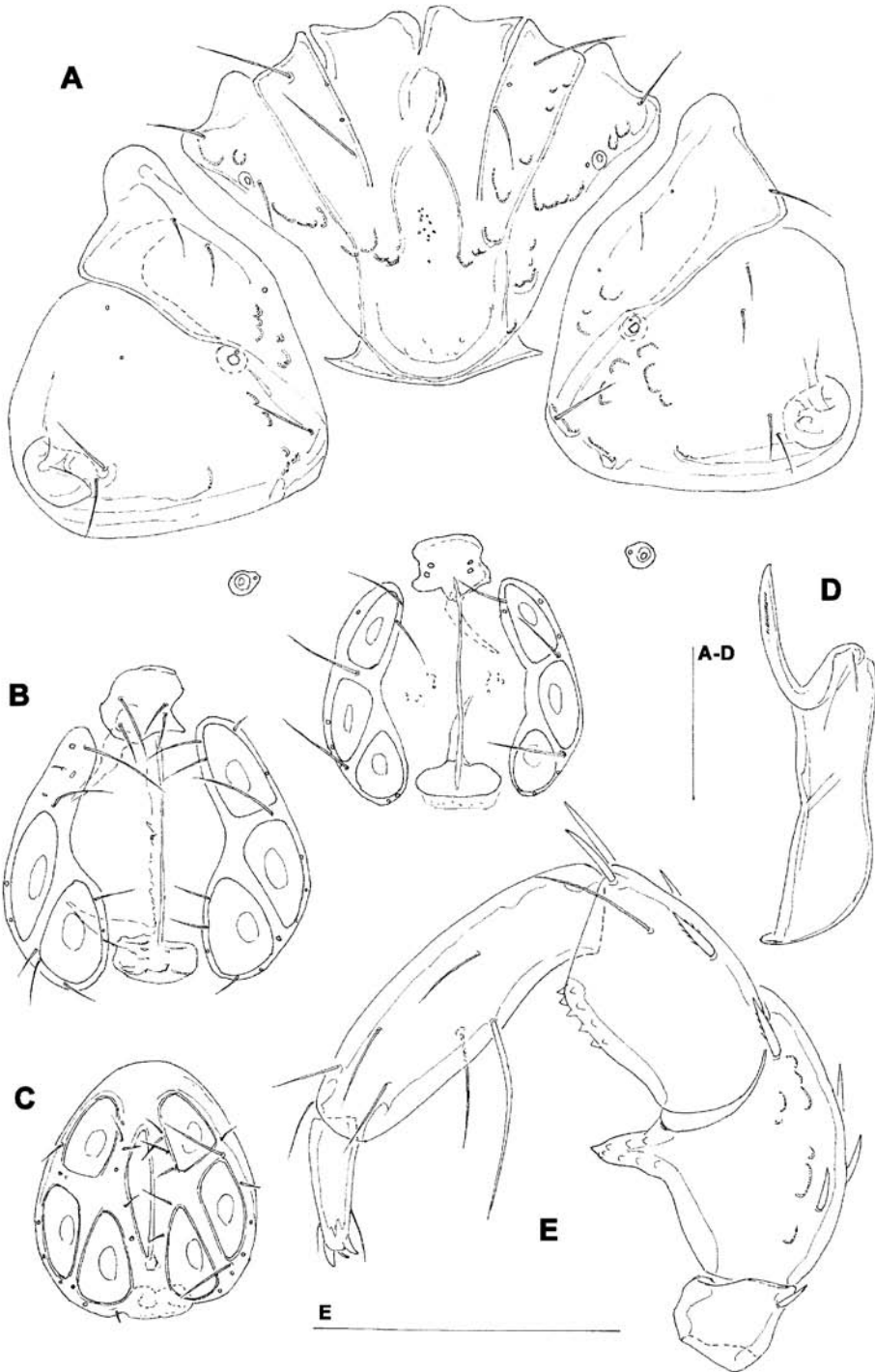
[http://species-id.net/wiki/Hygrobates\\_taiwanicus](http://species-id.net/wiki/Hygrobates_taiwanicus)

Figs 5–6

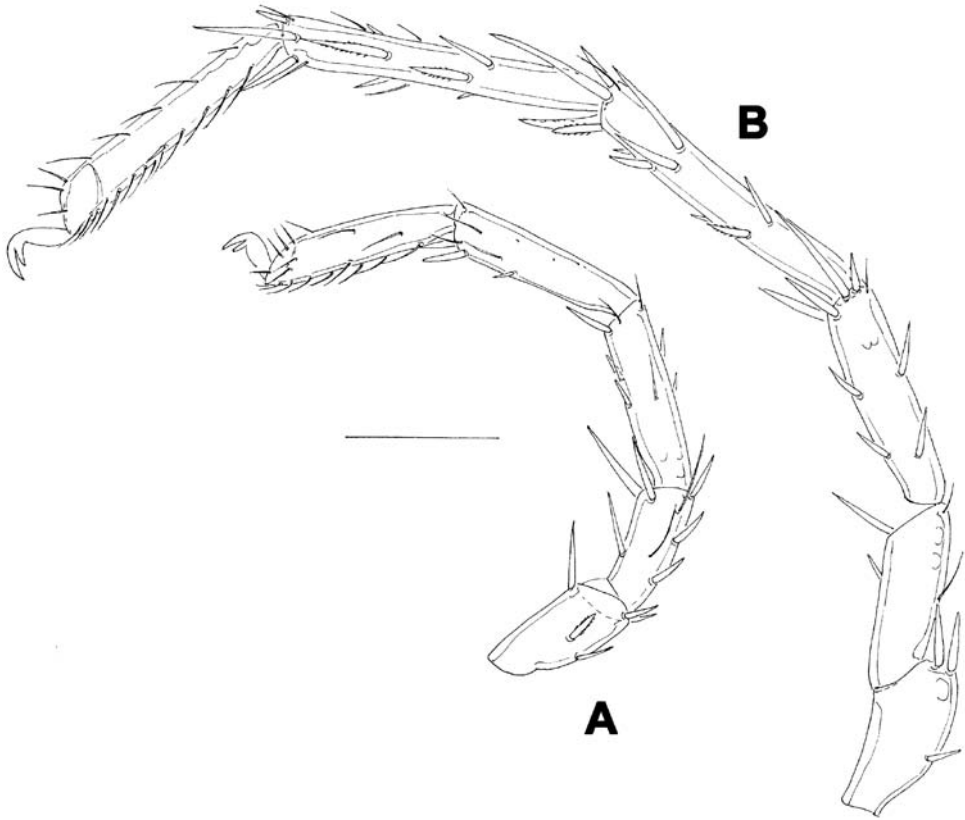
**Type series.** Holotype female (NMNS-6894-001), dissected and slide mounted, Taiwan, BA-3, Chinkualiao Stream, vi.2010. Paratypes: 0/1/0, same data as holotype; 1/1/0 (mounted), BA-1, Chinkualiao Stream, iii. 2010; 0/3/0, BA-4, Diyu Stream, iii.2010; 0/1/0, BA-5, Diyu Stream, iv.2010.

**Diagnosis.** Idiosoma L > 750; acetabula arranged in an obtuse angle; female pre-genital sclerite with four setae, its anterior margin extending beyond anterior margin of genital plates; female genital plates longer than gonopore; posterior end of female genital plates posterior to postgenital sclerite; P-2 ventrodistal projection elongate, cone-shaped; proximoventral seta on P-4 longer and thicker than distoventral seta.

**Description.** Female (holotype, in parentheses paratype). Idiosoma L 775 (778), W 613 (706); integument soft, with very fine striation. Capitulum broadly fused with Cx-I. Coxae (Fig. 5A): coxal field L 322 (359), Cx-III W 472 (500), posterior end of anterior coxal group rounded-truncate, Cx-I+II L/W 238 (259)/319 (344), posterolateral apodemes extending slightly beyond sclerotization. Suture line of Cx-III and Cx-IV nearly straight, incomplete, extending to near Cxgl-IV; medial margin of Cx-IV rounded-triangular. Genital field (Fig. 5A-B): L/W 181 (213)/173 (203), acetabular plates with smooth border, L 143-147 (175); acetabula arranged in an obtuse triangle, L Ac-1-3: 55-56 (66), 55-58 (72), 44 (66-68); pregenital sclerite with four setae, its anterior margin extending beyond anterior margin of genital plates. Excretory pore smooth. Palp (Fig. 5E): total L 358 (423), dL: P-1, 26 (34); P-2, 98 (111); P-3, 70 (85); P-4, 121 (136); P-5, 43 (57); dL P-2/P-4 ratio, 0.81 (0.82); chelicera (Fig. D) total L 250 (319), basal segment L 157 (200), claw L 100 (125), L ratio basal segment/claw 1.6 (1.6). Legs:



**Figure 5.** *Hygrobates taiwanicus* sp. n. (A–B, D–E = female; C = male): **A** = coxal and genital field **B–C** = genital field (paratypes) **D** = chelicera **E** = palp. Scale bars = 100  $\mu$ m.



**Figure 6.** *Hygrobates taiwanicus* sp. n., female: **A** = I-L-2-6 **B** = IV-L. Scale bar = 100  $\mu$ m.

dL of I-L-2-6 (Fig. 6A): 69 (89), 90 (109), 131 (156), 134 (159), 138 (161); dL of IV-L (Fig. 6B): 108 (128), 103 (128), 151 (184), 213 (263), 225 (272), 193 (234).

Males (n = 2): similar to female, except for genital field. Idiosoma L 775-794, W 625-656; coxal field L 338, Cx-III W 463, Cx-I+II L/W 231/334; genital field L/W 160-170/148-151, anterior margin convex, L Ac-1-3: 51-58, 63-66, 63-66; ejaculatory complex L 169. Palp (Fig. 5C): total L 365-373, dL: P-1, 28; P-2, 99-100; P-3, 71-75; P-4, 119-123; P-5, 48-47; dL P-2/P-4 ratio, 0.81-0.83; chelicera: basal segment L 194, claw L 103, L ratio basal segment/claw 1.9. Legs: dL of I-L-2-6: 74, 91-97, 138-141, 139-141, 142-144; dL of IV-L: 114, 106, 156, 228, 232, 203.

**Etymology.** The species is named for its occurrence in Taiwan.

**Remarks.** The new *Hygrobates* species belong to the group of the species characterized by the presence of two or three setae upon, and inside the margin of, the female pre-genital sclerite and proximoventral seta on P-4 longer and thicker than distoventral seta. This group includes three species (Matsumoto et al. 2005), all known only from middle Honshu (Japan), i.e., two lacustrine species, *Hygrobates biwaensis* Tuzovskij, 2003 and *H. rarus* Tuzovskij, 2003, which are known only from Lake Biwa, and one fluvial species, *H. capillus* Matsumoto Kajihara & Mawatari, 2005. Due to the elongate distoventral projec-

tion of P-2, *Hygrobates taiwanicus* sp. n. is most similar to *Hygrobates biwaensis* (in the following, in parentheses; data taken from Tuzovskij 2003) from which differs in the larger idiosoma dimensions (L 525-650 in both sexes), female genital plates longer (shorter) than gonopore, posterior end of female genital plates posterior (anterior) to postgenital sclerite and P-2 ventrodorsal projection cone-shaped (more elongated and slender, finger-shaped).

**Distribution.** Taiwan.

***Hygrobates (Hygrobates) cf. longiporus* Thor, 1898**

[http://species-id.net/wiki/Hygrobates\\_longiporus](http://species-id.net/wiki/Hygrobates_longiporus)

Figs 7A–D

**Material examined.** ECL-BA-3: 23.ix.2009 4/0; ii.2010 0/3/0; vi.2010 2/0. ECL-BA-4: 17.vi.2009 1/0/0. ECL-BA-5: iv.2010 1/0/0; 07.vii.2010 5/0; 27.vii.2010 19/0; 30.x.2010 0/2/0. ECL-BA-6: 17.vi.2009 3/2/0; 17.vi.2009 7/0; vi.2010 0/3/0; 01.vii.2010 2/0/0; 27.vii.2010 12/0 (0/1/0 mounted); 29.ix.2010 0/1/0.

**Remarks.** The most abundant *Hygrobates* species from the Baishih River drainage resemble to the Palaearctic *H. longiporus* Thor. In shape of coxal (Fig. 7A) and genital field (Figs 7B,D) and palp (Fig. 7C), no differences can be found to differentiate the specimens from Taiwan. Two additional species closely related to *H. longiporus* are described from Oriental part of China (Jin 1997), *H. neolongiporus* Jin 1997 (Guangxi, Guizhou) and *H. corimarginatus* Jin 1997 (Yunnan). According to the original description (Jin 1997), *Hygrobates neolongiporus* differs from *H. longiporus* in Cx-IV medial margins more closely approached to each other, more elongated Ac-3 and the triangular genital sclerites; *H. corimarginatus* differs in having a fewer denticles on the ventral side of P-2 and P-3 and genital field with more extended border of secondary sclerotization. However, all these characters are probably individually variable, and should be investigated with further specimens from the type area. For the time being, the populations from Taiwan are provisionally assigned to *H. longiporus*. However, for a judgement on the taxonomic state, the diagnostic features and taxonomic relationship of the Asian species of 'longiporus' species group require further revision.

**Distribution.** Palaearctic. New for Taiwan.

***Hygrobates (Hygrobates) hamatus* K. Viets, 1935**

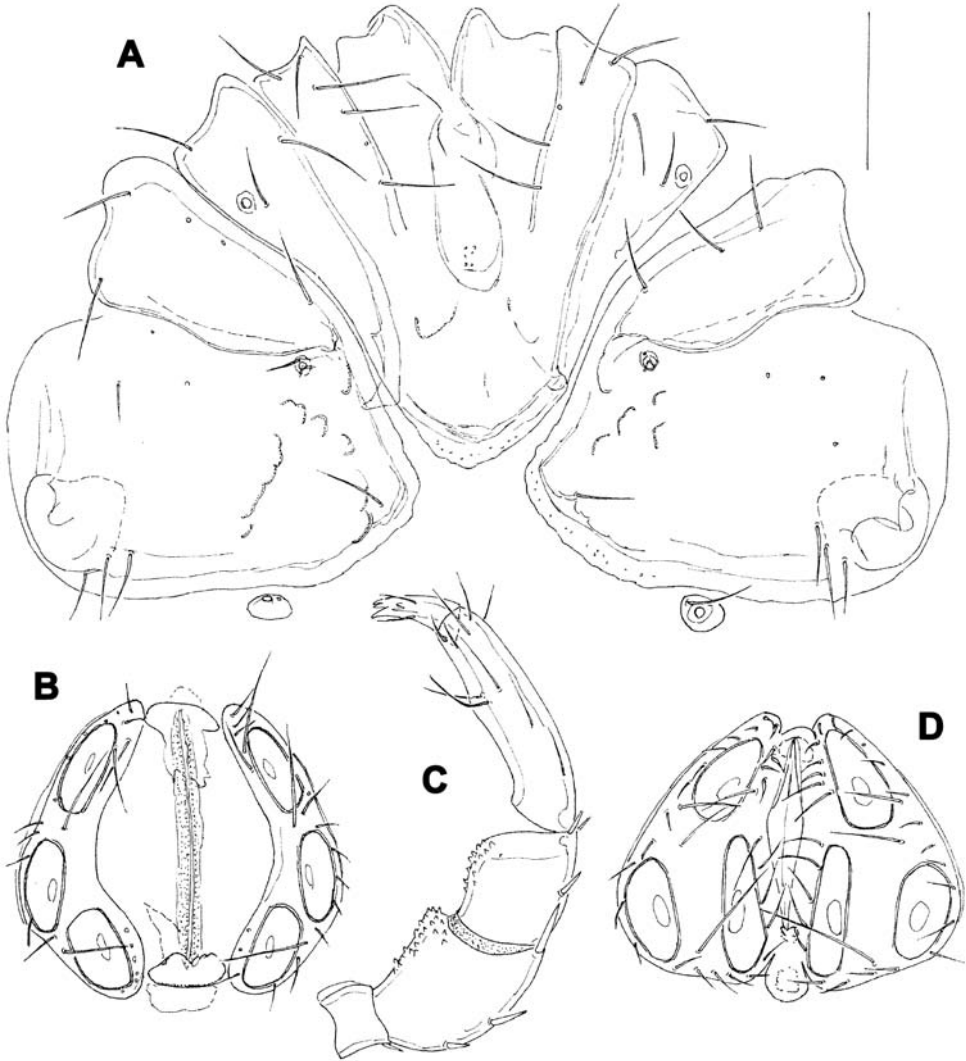
[http://species-id.net/wiki/Hygrobates\\_hamatus](http://species-id.net/wiki/Hygrobates_hamatus)

Figs 8A–C

**Material examined.** ECL-BA-3, vi.2010 0/1/0 (mounted). ECL-BA-5, 20.viii.2009 0/1/0.

**Remarks.** The specimens from Taiwan are in a good agreement with description of the Oriental *Hygrobates hamatus*. This species is very similar to *H. soari* K. Viets, 1911, a species widespread in the Afrotropical region, reaching in its distribution to northern Oman (Smit and Pešić 2010). As noted by Pešić et al. (2012) additional material should





**Figure 7.** *Hygrobates* cf. *longiporus* Thor, 1898 (A-C = female, D = male): **A** = coxal field **C** = palp **B, D** = genital field. Scale bar = 100  $\mu$ m.

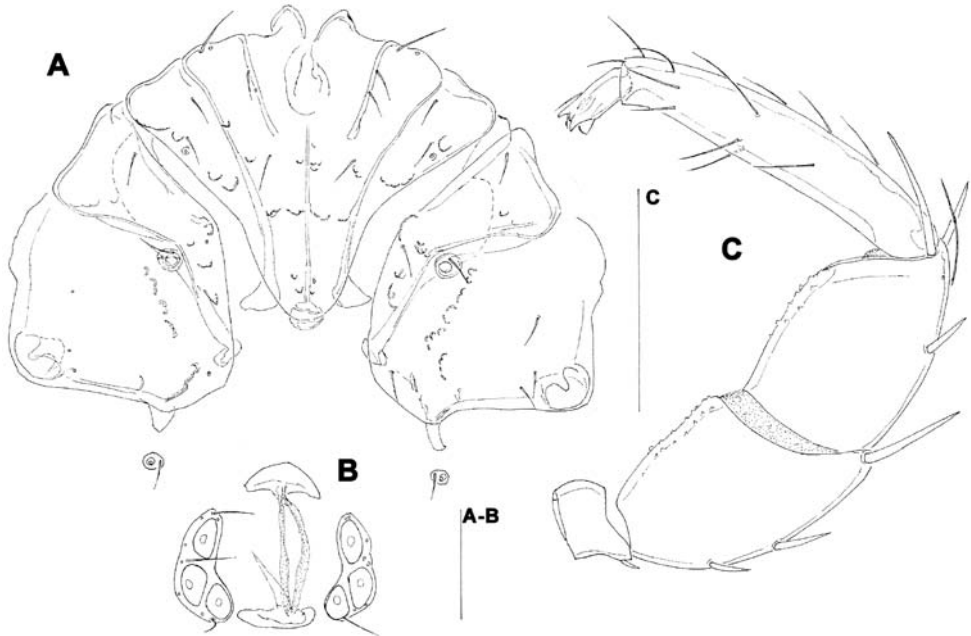
be studied in order to get an insight into on further diagnostic differences of these two species, what probably will require the application of molecular techniques.

In addition, we gave some measurements of the specimen of *H. hamatus* from Baishih River drainage which represented the easternmost record finding of this species.

Female. Idiosoma L/W 881/625. Coxae (Fig. 8A): coxal field L 353, Cx-III W 463, Cx-I+II L/W 260/337. Genital field (Fig. 8B): L/W 145/182, acetabular plates L 101-105; L Ac-1-3: 35-37, 38-39, 29-32. Palp (Fig. 8C): total L 442, dL: P-1, 26; P-2, 118; P-3, 101; P-4, 163; P-5, 34; dL P-2/P-4 ratio, 0.72.

**Distribution.** SE Asia, India, New Guinea, Australia, Iran. New for Taiwan.





**Figure 8.** *Hygrobatas hamatus* K. Viets, 1935, female: **A** = coxal field **B** = genital field **C** = palp. Scale bars = 100  $\mu$ m.

### Genus *Atractides* Koch, 1837

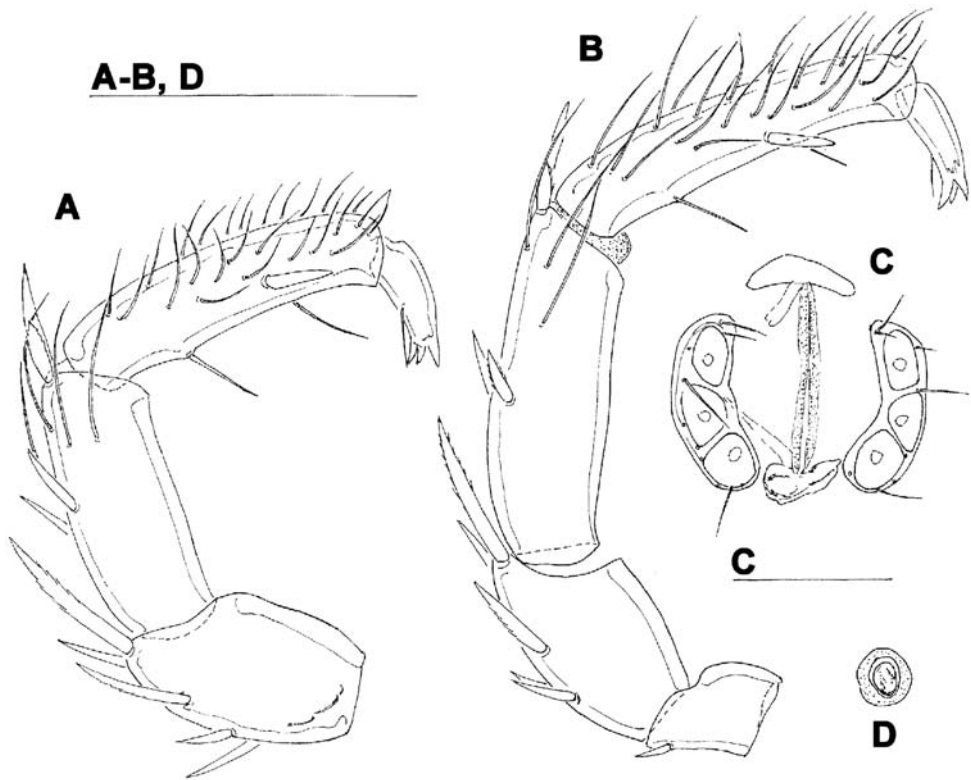
#### *Atractides* cf. *spatiosus* (K. Viets, 1935)

[http://species-id.net/wiki/Atractides\\_spatiosus](http://species-id.net/wiki/Atractides_spatiosus)

Figs 9A, 10B

**Material examined.** ECL-BA-1: 01.vi.2009 0/1/0; 02.vii.2010 0/1/0. ECL-BA-2: iv.2010 0/2/0; vi.2010 0/1/0. ECL-BA-3: 03.ix.2009 0/3/0. ECL-BA-4: iii.2010 0/4/0 (0/1/0 mounted); iii.2010 0/1/0. ECL-BA-5: iv.2010 0/1/0; 07.vii.2010 0/4/0. ECL-BA-6: iii.2010 0/1/0; iv.2010 0/2/0; vi.2010 0/1/0; ix.2010 0/1/0.

**Remarks.** The examined female specimens from Baishih River system resemble Oriental *Atractides spatiosus* (K. Viets, 1935). A problem exists regarding the similarity between *Atractides spatiosus* and *A. cognatus* (K. Viets, 1935), a further taxon originally introduced as a subspecies and later elevated to species rank by Pešić and Smit (2009). However, the populations attributed by Pešić and Smit (2009) to *A. cognatus* differ from the original description of the later (see: K. Viets 1935) in the shape of excretory pore (surrounded by narrow sclerotized ring in original description of *A. cognatus*), and probably represented an undescribed species. For the time being, the sclerotization of the excretory pore (smooth in *A. spatiosus* vs. sclerotized in *A. cognatus*, as shown in Fig. 9D), more elongated P-3 (compare Figs 9A and –B) and the shape of I-L-5 and -6 (compare Figs 10A and –B) appear to be the characteristics most important for distin-



**Figure 9.** **A** *Atractides* cf. *spatiosus* (K. Viets, 1935), female: **A** = palp, medial view (P-1 missing) **B–D** *Atractides* cf. *cognatus* (K. Viets, 1935), female: **B** = palp, medial view **C** = genital field **D** = excretory pore. Scale bars = 100  $\mu$ m.

guishing populations attributed to *A. spatiosus* and *A. cognatus*, respectively. However, our assignments to *A. spatiosus* and *A. cognatus* are difficult due to the lacking of males, and furthermore is based mainly on non-identity with alternative species.

**Distribution.** SE Asia. New for Taiwan.

***Atractides* cf. *cognatus* (K. Viets, 1935)**

[http://species-id.net/wiki/Atractides\\_cognatus](http://species-id.net/wiki/Atractides_cognatus)

Figs 9B–D, 10A

**Material examined.** ECL-BA-1: 23.ix.2009 0/1/0. ECL-BA-4: 20.viii.2009 0/1/0; 27.vii.2010 0/2/0. ECL-BA-5: 27.vii.2010 0/3/0; x.2010 0/1/0. ECL-BA-6: 01.vii.2010 0/1/0; 27.vii.2010 0/1/0; 30.x.2010 0/1/0 (mounted).

**Remarks.** See discussion under *Atractides* cf. *spatiosus*.

**Distribution.** SE Asia. New for Taiwan.



**Figure 10.** **A** *Atractides* cf. *spatiosus* (K. Viets, 1935), female: **A** = I-L-5 and -6 **B** *Atractides* cf. *cognatus* (K. Viets, 1935), female: **B** = I-L-5 and -6. Scale bar = 100  $\mu$ m.

## Acknowledgements

This study was supported by the research grants NSC100-627-B-002-009- and NSC101-2923-B-002-001-MY3 from the National Science Council, ROC. The authors also acknowledged the Agriculture Department from the New Taipei City Government for issuing the field sampling permit at the Baishih River during the study period. We are thankful to the anonymous referee for the careful work and valuable comments.

## References

- Jin D (1997) Hydrachnellae - Morphology, Systematics. A Primary Study of Chinese Fauna. Guizhou Science and Technology Press, Beijing, 1–356.
- Lundblad O (1936) Über einige Hydracarinen aus Java. Entomologisk tidskrift 57: 145–157.
- Lundblad O (1971) Weitere Beiträge zur Kenntnis der Fließwassermilben Javas. Arkiv för Zoologi 23: 293–359.
- Matsumoto N, Kajihara H, Mawatari SF (2005) *Hygrobates (Hygrobates) capillus* sp. n. (Arachnida: Acari: Hydrachnidia: Hygrobatidae) from south-central Honshu, Japan, with records of two allied species. Species Diversity 10: 27–36.
- Pešić V, Smit H (2009) New records of water mites of the genus *Atractides* Koch, 1837 (Acari: Hydrachnidia, Hygrobatidae) from Thailand, Malaysia and Sulawesi (Indonesia), with the description of four new species. Zootaxa 2240: 1–30.
- Pešić V, Smit H (2009) Water mites of the family Torrenticolidae Piersig, 1902 (Acari: Hydrachnidia) from Thailand, Part II. The genus *Monatractides* K.Viets. Zootaxa 2012: 1–27.
- Pešić V, Smit H, Gerecke, R, Di Sabatino A (2010) The water mites (Acari: Hydrachnidia) of the Balkan peninsula, a revised survey with new records and descriptions of five new taxa. Zootaxa 2586: 1–100.
- Pešić V, Semenchenko K, Chatterjee T, Yam R, Chan B (2011) New records of water mites of the family Torrenticolidae (Acari, Hydrachnidia) with descriptions of two new species from Nansih River system in Taiwan and redescription of *Torrenticola ussuriensis* (Sokolow, 1940) from the Russian Far East. ZooKeys 116: 1–14. doi: 10.3897/zookeys.116.1253
- Pešić V, Smit H, Saboori A (2012) Water mites delineating the Oriental and Palaearctic regions - the unique fauna of southern Iran, with description of one new genus, one new subgenus and 14 new species. Zootaxa 3330: 1–67.
- Shih HT, Fang SH, Ng PKL (2007) Phylogeny of the freshwater crab genus *Sommanniathelphusa* Bott (Decapoda: Parathelphusidae) from Taiwan and the coastal regions of China, with notes on their biogeography. Invertebrate Systematics 21: 29–37. doi: 10.1071/IS06007
- Smit H, Pešić V (2010) New species of water mites from Oman, with some zoogeographical notes (Acari: Hydrachnidia). Acarologia 50: 151–195. doi: 10.1051/acarologia/20101953
- Tuzovskij PV (2003) Description of three new water mite species of the genus *Hygrobates* (Acariformes, Hygrobatidae). Zoologicheskij Zhurnal 82: 1325–1338. [in Russian]

- Viets K (1935) Die Wassermilben von Sumatra, Java und Bali nach den Ergebnissen der Deutschen Limnologischen Sunda- Expedition. Archiv für Hydrobiologie, Supplement, 13, Tropische Binnengewässer 5: 484–594.
- Zhang X, Jin DC, Guo JJ (2012) Descriptions of two new species of the genus *Sperchon* Kramer, 1877 (Acari: Hydrachnidia, Sperchontidae) from China. International Journal of Acarology 38: 23–29. doi: 10.1080/01647954.2011.577452