

中国隙蛛属一新种(蜘蛛目：漏斗蛛科)

胡自强 王家福
(湖南师范大学生物系, 长沙)

摘要 本文描述了漏斗蛛科隙蛛属一新种：波纹隙蛛(*Coelotes undulatus* sp.nov.)。该新种产于福建省武夷山自然保护区。文内对该新种的鉴别特征进行了简要描述，并附有触肢器图。

关键词 蜘蛛目 漏斗蛛科 隙蛛属 新种

波纹隙蛛, 新种 *Coelotes undulatus* sp. nov. (图1—5)

正模：，副模1。福建省武夷山自然保护区，1986年7月20日，胡自强采。

正模 体长12.00mm，头胸部长5.50mm，宽4.10mm，腹部长6.50mm，宽4.90mm。

8眼2列。前中眼小于前侧眼，前中眼间距小于前中侧眼间距，并小于前中眼直径。后中眼间距大于后中眼直径，后中侧眼间距大于后中眼直径。中眼区长方形，长度略大于宽度，前边等于后边。头胸部黄褐色，正中有一条细的褐色纵线与中窝相连，两侧边缘灰黑色。颈沟明显，与放射沟均呈灰褐色。螯肢长，整基褐色，并长满刚毛，螯爪黄褐色；前齿堤3齿，后齿堤2齿。颚叶和下唇深褐色，其上均布满粗刚毛。胸板灰褐色，正中部有一黄色条斑，上有稀疏的毛，其后端尖狭并插入第 步足之基节间。步足黄褐色，腿节两端和中部、膝节远端和胫节两端有深褐色半环状斑纹。足式：

各足总长、腿节、膝节、胫节、后附节、附节的量度如下(单位：mm)：第 步足为35.50、9.10、2.30、9.40、10.30、4.40；第 步足为28.30、7.50、2.00、6.90、8.00、3.90；第 步足为23.30、5.70、1.70、5.20、7.30、3.40；第 步足为29.70、7.30、1.90、6.80、9.60、4.10。

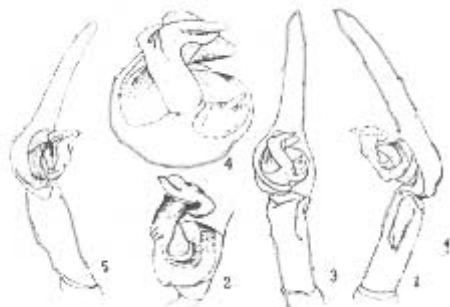


图 波纹隙蛛，新种 *Coelotes undulatus* sp. nov.

1.触肢器外侧观；2.生殖球外侧观(放大)；3.触肢器腹面观；4.生殖球腹面观(放大)；5.触肢器内侧观

腹部背面黄白色，心脏斑褐色，其前、后两侧各有一灰黑色大斑块。心脏斑后有3个灰黑色的波状粗斑纹，腹侧和腹末灰黑色。腹面生殖沟至纺器之间灰褐色，其两侧各有一黄白色条斑。触肢的跗舟细长，胫节长，其胫节突亦长，侧沟短小。引导器短小呈喙状，支柱与中血囊不完全愈合。

本新种的保护器与 *Coelotes rudolfi* (Schenkel, 1923) 的较相似，但有下列区别：(1)本新种无膝节突，而 *Coelotes rudolfi* 有膝节突；(2)本新种的胫节较 *Coelotes rudolfi* 的胫节长；(3)本新种的跗舟较长，而 *Coelotes rudolfi* 的跗舟为一般长度；(4)本新种各步足均较 *Coelotes rudolfi* 的步足长。

参考文献

- [1] 朱传典 中国蜘蛛名录 白求恩医科大学学报(增刊) 1983:2—130
[2] Schenkel, E. Schwedisch-chinesische wissenschaftliche Expedition nach den nordwestlichen Provinzen Chinas. —Ark. Zool. 1937 29 (A:1) :1—314
[3] Schenkel, E. Chinesische Arachnoidea aus Dem Museum Hoangho—Peiho in Tientsin. Boletim Do Mus. Nacional. Brasil. Zoologia 1953 119:1—108

A NEW SPECIES OF SPIDER OF THE GENUS COELOTES FROM CHINA (ARANEAE: AGELENIDAE)

Hu Ziqiang Wang Jiafu

(Department of Biology, Hunan Normal University, Changsha)

This paper deals with a new species of the genus *Coelotes*. The type specimens are preserved in Department of Biology, Hunan Normal University.

Coelotes undulatus sp. nov. (Figs. 1-5)

Holotype , paratype 1 , Mt. Wuyishan (27 ° 78 N, 117 ° 65 E) , Fujian Province. July 20, 1986. Hu Ziqiang.

Holotype: total length 12.00mm, carapace 5.50 × 4.10. abdomen 6.50 × 4.90.

8 eyes in two rows. AME < ALE. The separation between AME shorter than that between AME and ALE, or the diameter of AME. The separation between PME longer than the diameter of PME. The separation between PME and PLE larger than the diameter of PME. The median ocular square-shaped but the length slightly longer than the width, and the anterior border equals to the posterior one. Carapace shining yellowish brown. Cervical groove and radial furrows greyish brown. Chelicerae are long with three promarginal teeth and two retromarginal teeth. Sternum greyish brown, with a yellow streak in the middle. Legs yellowish brown, and there are greyish brown rings on the middle and the two ends of the femur, distal ends of patella, and the two ends of tibia. Leg formula: , , , .

Abdomen dorsal surface yellowish white. Cardiac pattern brown, behind it there are three blackish grey wave-shaped streaks. Ventral surface between genital groove and spinneret greyish brown. Cybinum slender and long; tibia and tibial apophysis also long. Conductor beak-shaped.

The conductor of this new species resembles that of *Coelotes rudolfi* (Schenkel, 1923). But the new species can be distinguished by: 1. The male palpa has no tibial apophysis; 2. The tibia is longer; 3. The cybium is longer; and 4. All legs are longer.

Key Words Araneae Agelenidae *Coelotes* new species